

Gipping Angling and Preservation Society

Society Waters

Alderson Lakes

Alderson Lakes are situated just outside Needham Market. These lakes are entirely owned by the society and as such are the focus of most of the committees re-stocking policy with large amounts of fish being added at various times during the year, (keep an eye on the news page). Some swims at this venue are particularly suitable for disabled anglers with easy & close car access and firm & level concrete bases. Also at this site we have 1st class toilet facilities which are available for all members, male, female and disabled. (Keys are obtainable from the Gen: Sec).



The beds of both the lakes are mainly 'gravel & sand' with reeds, weed beds and lilies in most areas around the edges. The large lake is deeper in a couple of places (8-10ft) but generally around 6ft. One corner of the large lake is shallow and weeds up in the summer, perfect for tench which run to big weights. An island feature is also a good holding place for the fish population.

Barham 'B' Pit

Barham is accessed via Claydon village and has a combination locked gate (number in membership book). It is the largest water we have in the society and contains all species of fish but the main types are Carp, Pike, Tench and Bream. It fishes both winter and summer and so is a good all round fishery. Depths vary dramatically and a good knowledge of the water is required to obtain the best fishing.



Please observe all the rules at this fishery as it is our flagship water, and please don't forget to take your litter home at the end of the day.

Causeway Lakes

The Causeway is accessible from Blakenham (see map) it is quite a deep lake (up to 10ft in places) and fairly open. It is both a summer and winter-time venue. It contains most species of fish with a very large head of elusive Bream which at times can give bags up to 50/60lbs in the right conditions. There are also Roach, Rudd and big Pike to catch as well as a few Carp, there has also been the odd very small Zander caught here.



Please observe the rules at all times as this is on the site of a working farm and shut all gates when entering or leaving the property.

See also **Perch Pit, Shamford Lock and Lagoon**

Perch pit (Causeway Lakes)

Perch pit is accessible from Blakenham (see map) it is at the left side of the Causeway Lakes and is a small mature pit, there are only a handful of swims available but it is well worth a try because it contains some very nice Tench, Roach, Rudd and Pike, as well as a few Dace and Chub which enter from the river in times of flood.



Please observe the rules at all times as this is on the site of a working farm and shut all gates when entering or leaving the property.

See also **Causeway Lakes, Shamford Lock and Lagoon**

River Gipping (Barham)

This part of the river Gipping lends itself to the roaming angler, being a winding and narrow stretch it supports some very nice Chub and a small shoal of Bream (which can be difficult to locate) and always the possibility of some nice Roach.



See also **Barham 'B' Pit**

River Gipping (Shamford Lock)

Reached via Blakenham village this is a beautiful part of the Gipping Valley, this stretch contains a head of Tench, Roach and Bream with large Pike making this a universal fishery. It tends to fish best when there is enough flow to run a waggler through, but it can also weed up badly in the summer months.

Please observe the rules at all times as this is on the site of a working farm and always shut all the gates when entering or leaving the property.



See also **Causeway Lakes, Perch Pit and Lagoon**

River Gipping (Bramford)

The Bramford stretch is a favorite venue for the winter river fishermen of the club as it presents an ideal river environment for all river species with Roach, Perch, Tench, Bream and Pike being the main species. The stretch starts just below the picnic site at Bramford and goes downstream through 'Hazel Wood' and all the way down to Sproughton Mill. It usually fishes best when the winter floods have removed the weeds from the river and there is a reasonable flow going through. Casters, chopped worm or punch are all good baits to try.



River Gipping (Sproughton)

The Sproughton stretch of the river Gipping Starts at the road bridge and progresses downstream past the old sugar beet factory up to the first railway bridge where the Ipswich Councils Stretch starts. It contains every species that a river should have although at times of weedy or low levels can be difficult to fish, but can be very rewarding for the dedicated angler.



River Gipping (Elton Water Bank)

Accessible from the 'Hadleigh Road Industrial Area' and with a combination lock gate which must be locked at all times after entering or leaving the bank. This is a prime stretch of the river Gipping with a large head of Tench & Bream, with all other species present at various times of the year. It seems to fish best at times of flow and colour but holds other surprises.



River Gipping Lagoon (Shamford)

The Lagoon is accessible from Blakenham (see map) it is at the right side of the Causeway lakes and is really the top end of the Sharmford river stretch. Deep in places (up to 12ft) it contains most species with a very good head of Pike, there are also Roach, Rudd and a few Tench to catch as well as a few Dace and Chub.



Please observe the rules as this is on the site of a working farm and shut all gates at all times when entering or leaving the property.

See also **Perch Pit, Shamford Lock and Causeway Lakes**

Alderman Canal

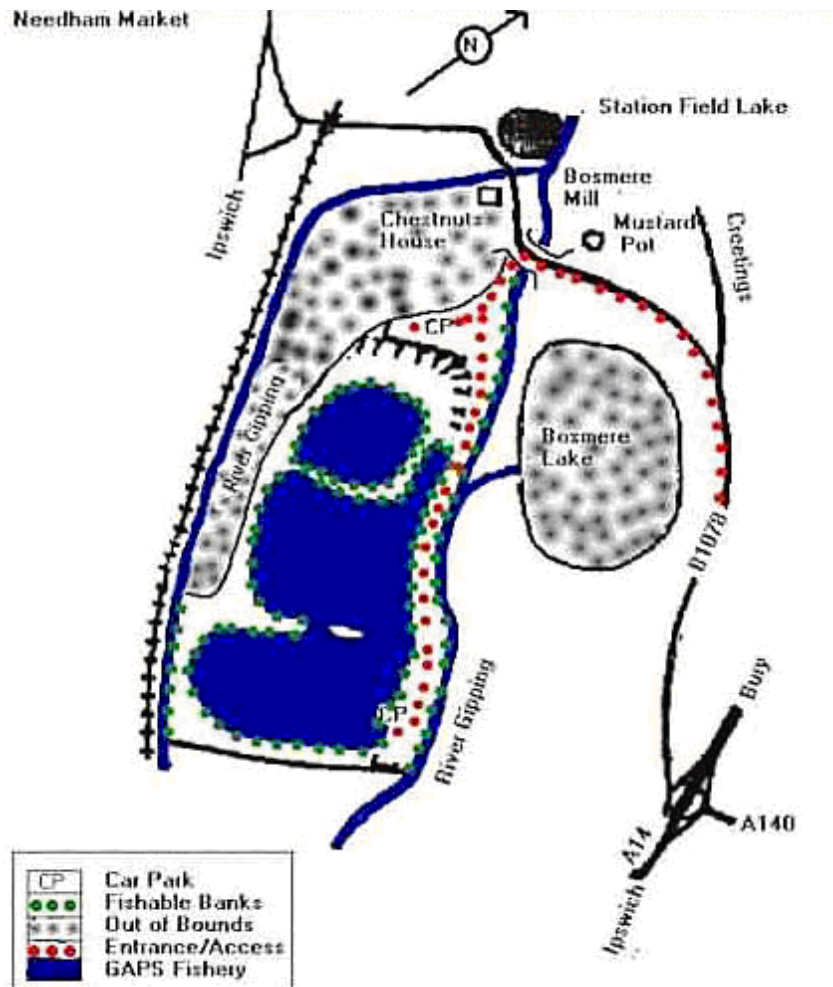
This water was obtained by us as part of a 'Clean up' operation between various groups in the town. It is really only for the town juniors to try their hand at fishing although some anglers have had a few good tench and roach from here. (Parking is a problem).



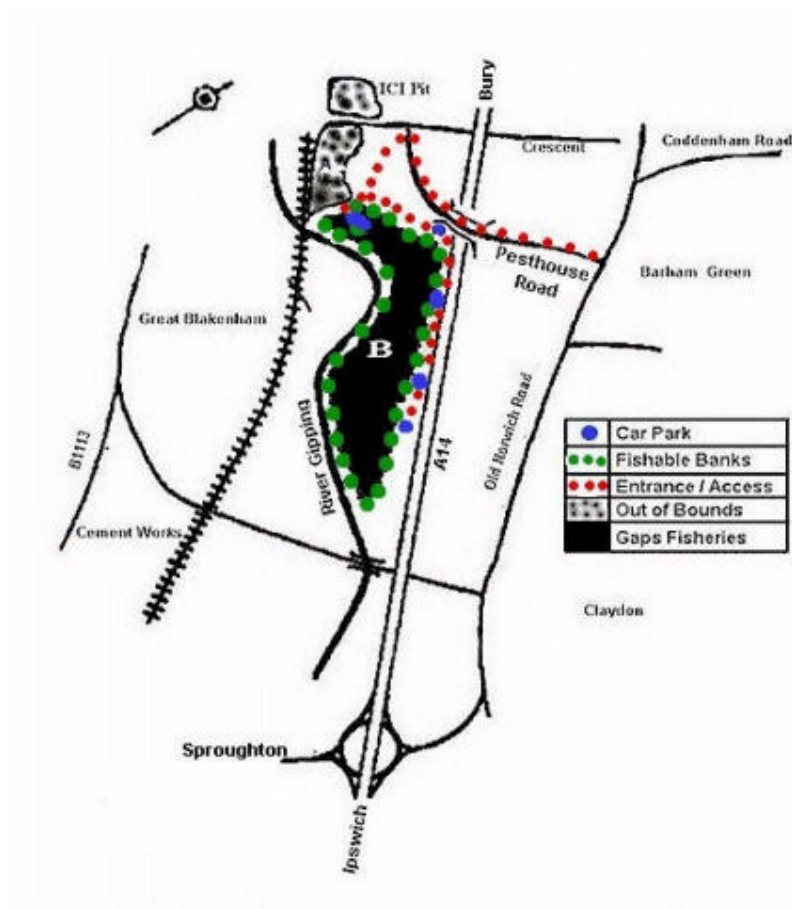
Gipping Angling and Preservation Society

Maps and Directions to G.A.P.S. Waters

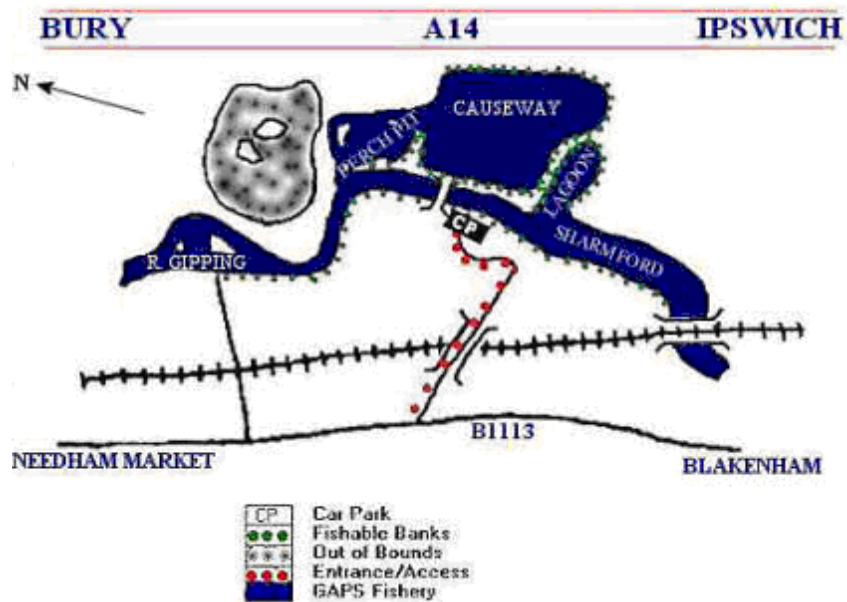
Alderson Lakes



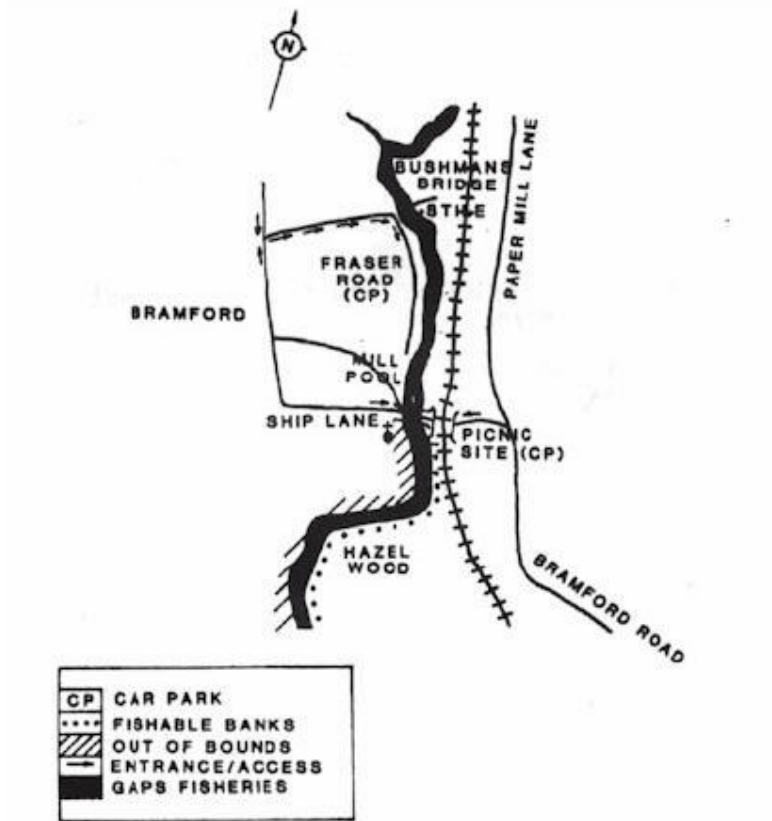
Barham 'B' Pit and the River Gipping



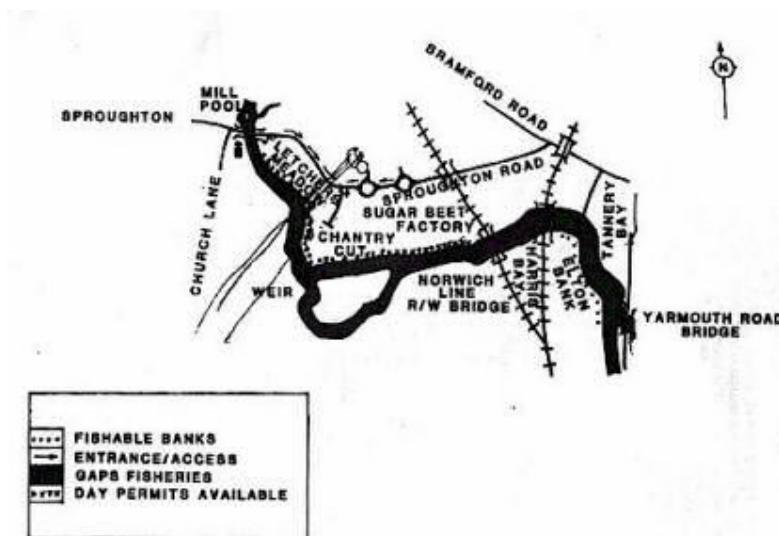
Causeway Lakes, Perch Pit and Shamford Lock



River Gipping at Bramford



River Gipping at Sproughton



Alderman Canal

